

Rock 'N Go® Accessories



2L-A-SD
Lateral Support
(Must choose fabric option*)



2C-CU
Cushion
(Must choose fabric option*)



2F-ST-A
Standard Footrest



2M-SP-SD2
Storage Pouch



2F-EL-A
Elevating Legrest



2C-HP
Standard Head Pillow
(Must choose fabric option*)



2M-HS-SD2
Heal/Leg Strap



2C-SP
Support Head Pillow
(Must choose fabric option*)



2M-SB-SD2
Seat Belt

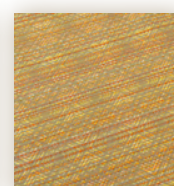
Specifications

Front Wheels	24-inch Mag
Rear Casters	5-inch Swivel
Frame	16 gauge tubular steel,
Frame finish	Polyester Powder Coated
Seat Height From Floor	16 To 19 Inches (Adjustable In 1 Inch Increments)
Overall Width	28.5 Inches
Chair Weight	63 Lbs. (No Accessories)
Overall Length	32 Inches (Without Footrests)
Seat Width	20 Inches
Seat Depth	16 Inches
Height Of Backrest From Seat	32 Inches
Weight Capacity	350 Lbs.
Seat Tilt Angle	30 Degrees
Limited Warranty	7 Years – Frame 1 Year – Sling Seat & Cushions

Fabric Options



Illusion
Mesquite



Lattice

Contact Your Local Representative:



The Rock 'N Go® Wheelchair

An Innovative Design for Safety and Comfort



12-ST-SD-IM



11-EL-SD-L

Unique Advantages of the Rock 'N Go®

ROCKING:

A simple flip of the lever adds a gentle, soothing, rocking motion. Rocking promotes wellness and strength by the use of leg and trunk muscles, which improves muscle tone and stimulates circulation. Moreover, the rocking motion has a calming effect that often results in the reduction or elimination of the need for protective restraints. Healthcare professionals in nursing homes and rehabilitation facilities tell us that the residents in Rock 'N Go chairs are often less agitated, which makes caring for them easier.



ADJUSTABILITY:

The ergonomic design helps to maintain proper posture by supporting the head, shoulders and lower back, which makes breathing and swallowing easier. The seat deck can be easily adjusted to the proper height from the floor to aid in leg comfort and assist self-propulsion.



UPRIGHT POSITION:

The Rock 'N Go is easily positioned at a dining or activity table. For transport or self-propulsion, simply lock the Rock 'N Go in the upright position. The locking lever is accessible to both user and caregiver and maneuvering is a cinch both indoors and out.

COMFORT:

The luxurious padding in our Rock 'N Go chairs is designed for extended seating. The Crypton fabrics feel cool, comfortable and luxurious, while providing the ultimate in stain resistance, cleaning and moisture protection.



TILT POSITION:

For utmost comfort while napping, reading or talking with friends, semi-reclined is the position of choice for many users. In the tilt position, the Rock 'N Go supports the head of the user in a way that enhances eye contact with other people who are standing or sitting nearby, making social interaction easier.



SAFETY & STABILITY:

In the tilt position, users are appropriately supported in a deep wedge that keeps them securely in the chair and helps to prevent pressure ulcers. The Rock 'N Go wheelbase is nine inches longer than standard wheelchairs, providing superior stability.

